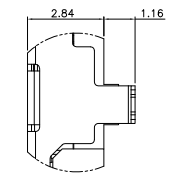
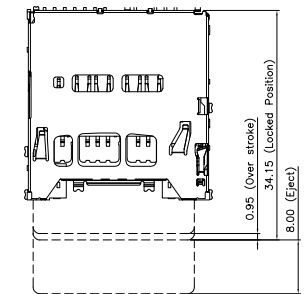
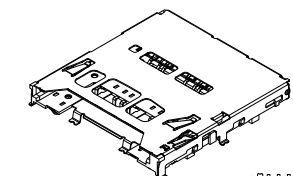
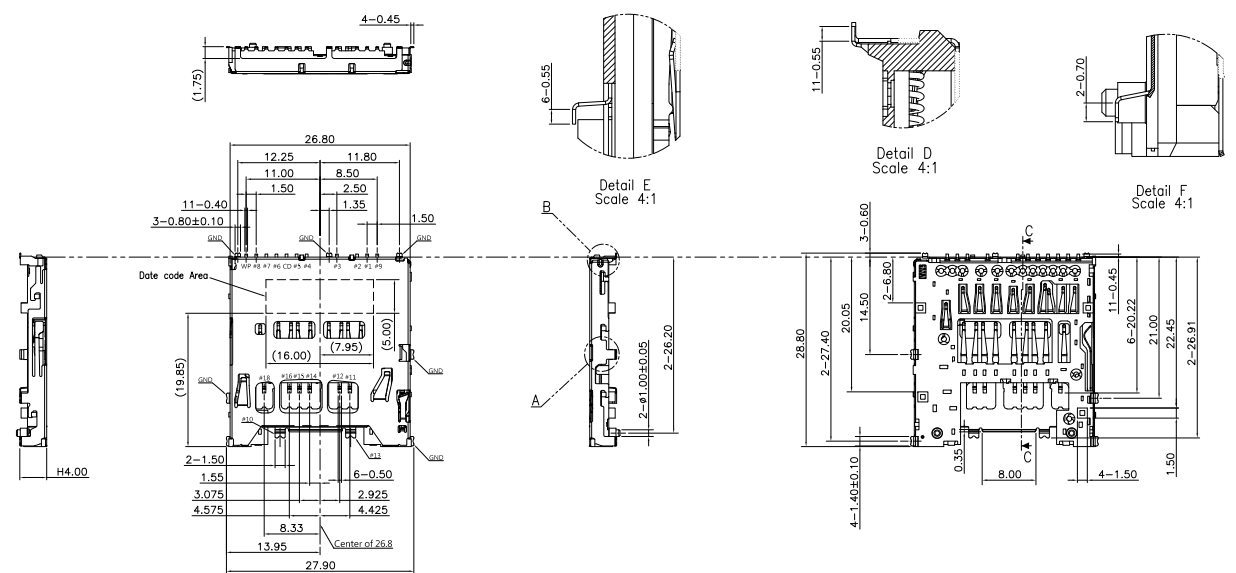


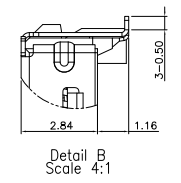
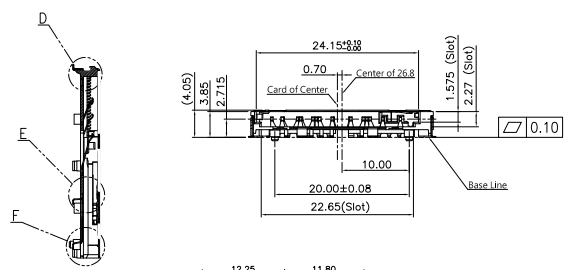
REVISION HISTORY			
REV	DESCRIPTION	Drawing	DATE
01	PROPOSAL	Allen	2021/10/18



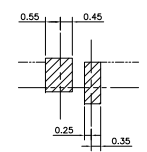
Detail A Scale 4:1

NOTE:

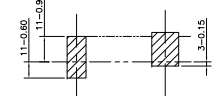
- MATERIAL:
 - 1.1 PLASTIC: LCP, BLACK, UL94 V-0
 - 1.2 CONTACT: COPPER ALLOY
 - 1.3 SHELL: STAINLESS STEEL
- PLATING:
 - 2.1 CONTACT:
 - CONTACT AREA: GOLD (SEE TABLE) PLATING OVER Ni 50µ" MIN.
 - SOLDERABLE: GOLD FLASH PLATING OVER Ni 50µ" MIN.
 - 2.2 SHELL: Ni 50µ" MIN.



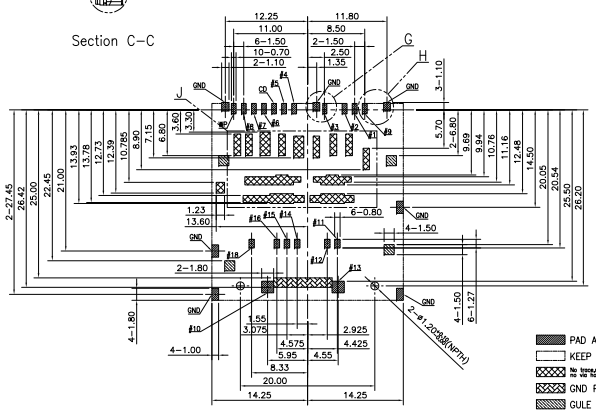
Detail B Scale 4:1



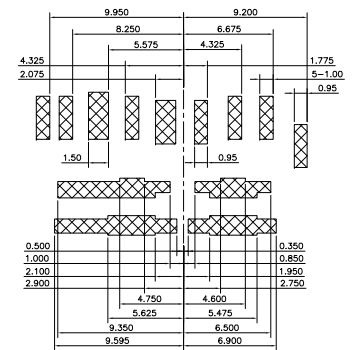
DETAIL G SCALE 4:1



DETAIL H SCALE 4:1



RECOMMENDED PCB LAYOUT (TOP VIEW)
TOLERANCE UNLESS OTHERWISE SPEC ±0.05



DETAIL J SCALE 2:1

TABLE

CHT P/N	TABLE A GOLD PLATING THICKNESS
A0891-0003	Au 30u"
A0891-0001	G/F

PRODUCT SPECIFICATION: DOC.No: SP-AXXX-XX	SCALE 1 : 1	DESIGN UNITS mm
TEST REPORT DOC.No: TR-AXXX-XX	DRAWN Allen	DATE 2021/06/11
GENERAL TOLERANCES (UNLESS SPECIFIED)	CHECKED	DATE
X.XXX ± 0.10	APPROVED	DATE
X.XX ± 0.20		
X.X ± 0.35		
ANGULAR ± 3°	DWG NO. SA0891-001	
THIRD ANGLE PROJECTION		

Pin Assignment							
Pin#	SD Mode	UHS II Mode	SD Express Card	Pin#	SD Mode	UHS II Mode	SD Express Card
#1	CD/DAT3		PERST#	#11		DO+	PCle_Tx+
#2	CMD			#12		DO-	PCle_Tx-
#3	VSS1	VSS1	VSS1	#13		VSS4	VSS4
#4	VDD	VDD1	VDD1	#14		VDD2	VDD2
#5	CLK			#15		D1-	PCle_Rx-
#6	VSS2	VSS2	VSS2	#16		D1+	PCle_Rx+
#7	DAT0	RCLK+	REFCLK+	#17		VSS5	VSS5
#8	DAT1	RCLK-	REFCLK-	#18			VDD3
#9	DAT2		CLKREQ#	CD			Card Detect
#10		VSS3	VSS3	WP			Write Protect

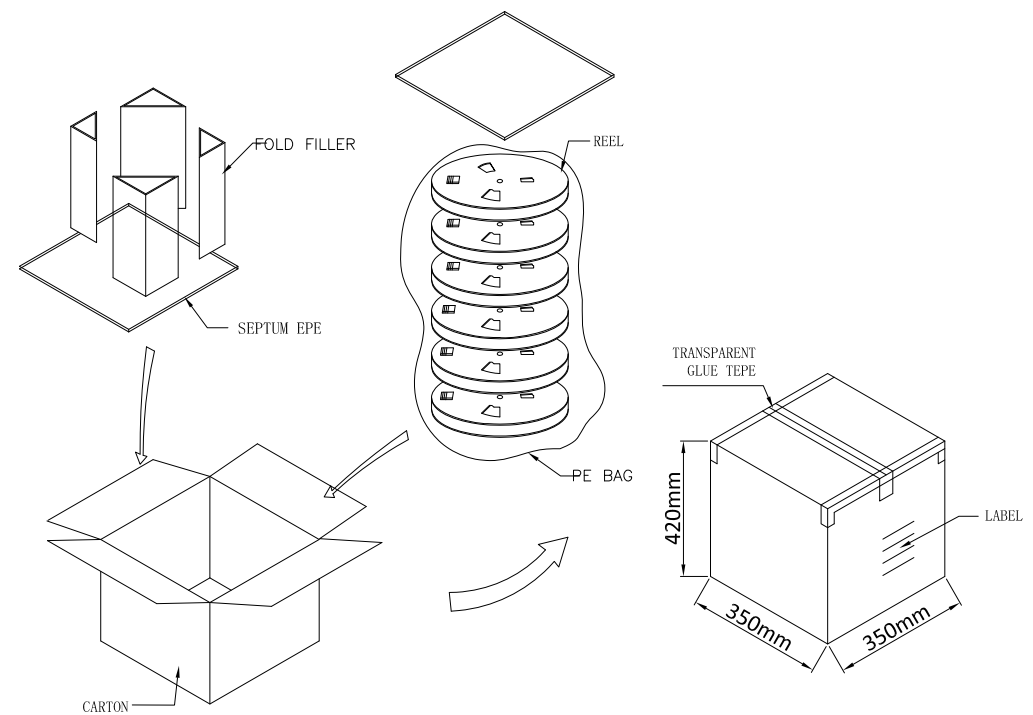
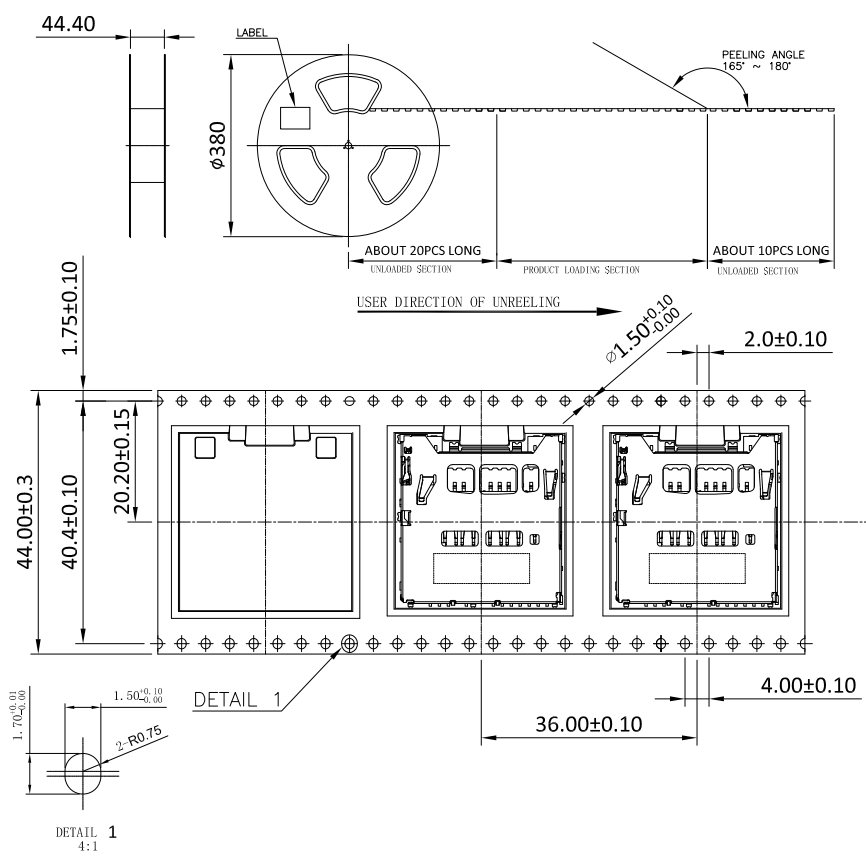
Function #10, #13, #17 were integrated into 2 pin in Mechanical design, and compares to the layout would be (#10, #13)

CHT 群匯科技股份有限公司
CHIUN HUEI Technology CO., LTD.

TITLE
SD 7.0 H4.0 SMT
PUSH-PUSH

PART NO. SEE TABLE	DWG REV. 01	SHEET NO. 1 OF 1
-----------------------	----------------	---------------------

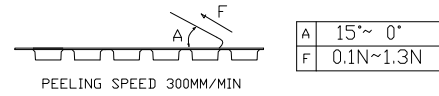
REVISION HISTORY			
REV	DESCRIPTION	Drawing	DATE
01	PROPOSAL	Allen	2021/10/18



TABLE

PRODUCT P/N	PARTS PER SHIPPING CARTON	PARTS PER REEL	LOADED REEL PER SHIPPING CARTON
A0891-0003	2700	450	6
A0891-0001			

1. COVER TAPE PEELING FORCE:



2. PART DIMENSIONS MEET EIA-481-2-A REQUIREMENT

PRODUCT SPECIFICATION: DOC.No: SP-AXXXX-XX	SCALE 1 : 1	DESIGN UNITS mm
TEST REPORT DOC.No: TR-AXXXX-XX	DRAWN Allen	DATE 2021/10/18
GENERAL TOLERANCES (UNLESS SPECIFIED)	CHECKED	DATE
X.XXX ± 0.10	APPROVED	DATE
X.XX ± 0.25	ANGULAR ± 3°	
X.X ± 0.38	DWG NO. PA0891-001	PART NO. SEE TABLE
THIRD ANGLE PROJECTION	DWG REV. 01	SHEET NO. 1 OF 1

CHT 群匯科技股份有限公司
CHIUN HUEI Technology CO., LTD.

TITLE
SD 7.0 H4.0 SMT
PUSH-PUSH