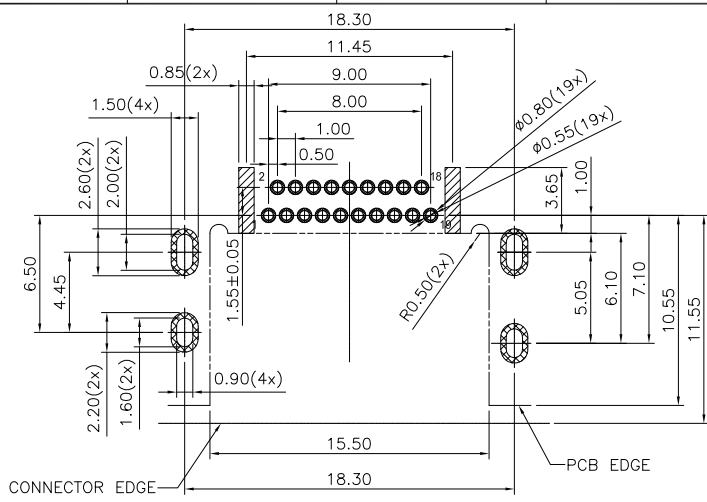
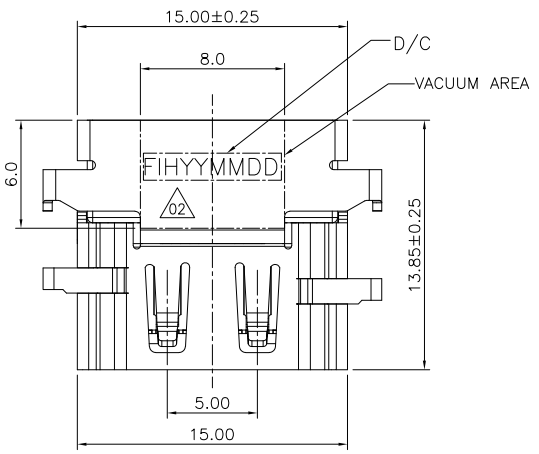


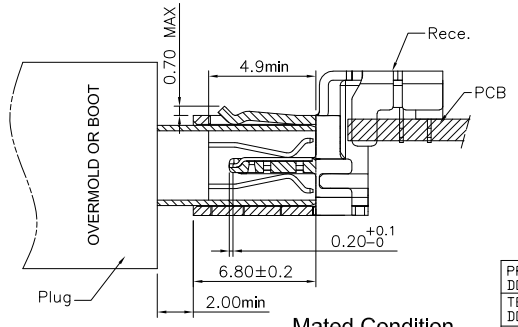
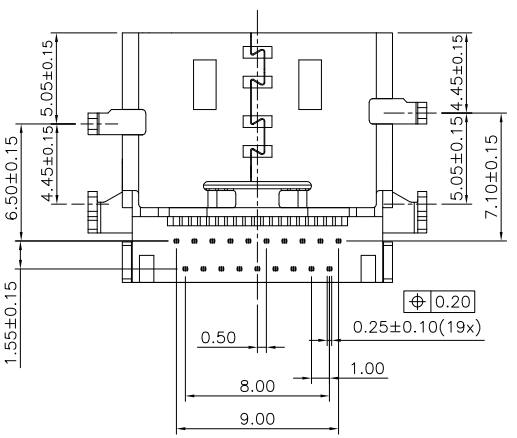
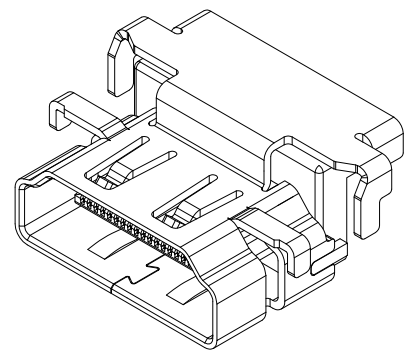
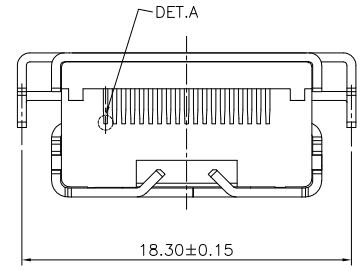
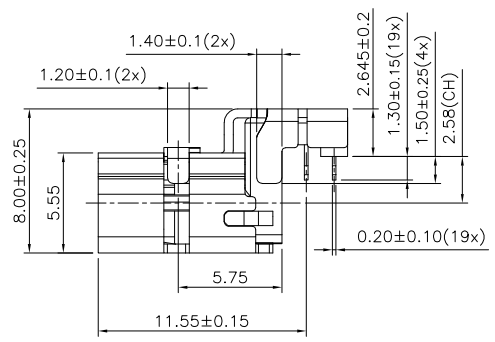
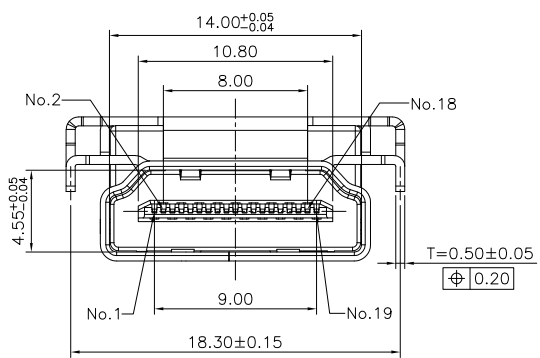
REVISION HISTORY			
REV	DESCRIPTION	Drawing	DATE
02	修改TITLE & D/C	Allen	2022/04/22



RECOMMENDED P.C.B LAYOUT (COMPONENT SIDE)
 THICKNESS=1.20±0.05 (TOP VIEW)

STAND OFF AREA(禁止操作)
 PAD AREA

- NOTE:
- MATERIAL:
 - 1.1 HOUSING: LCP+30% G.F
UL94V-0, COLOR:BLACK
 - 1.2 CONTACT: C2680.
 - 1.3 SHELL: SK7.
 - FINISH:
 - 2.1 CONTACT: GOLD (SEE TABLE) PLATED ON CONTACT AREA
100u" MIN. MATT TIN PLATED ON SOLDERTAILS
50u" MIN. NICKEL UNDERPLATED OVER ALL.
 - 2.2 SHELL: 50u" MIN. NICKEL UNDERPLATED OVER ALL.



TABLE

FIH P/N	TABLE A GOLD PLATING THICKNESS
A0920-0003	Au30u
A0920-0001	G/F

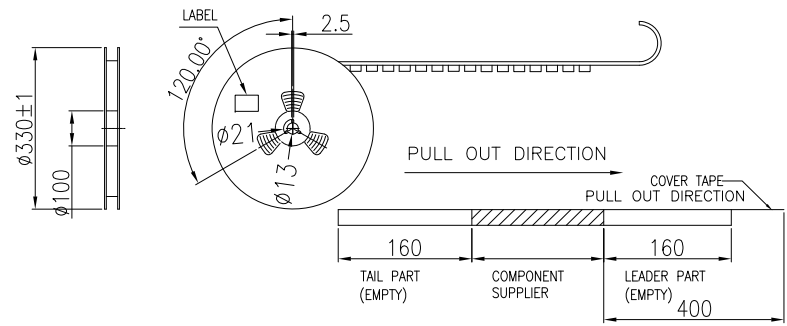
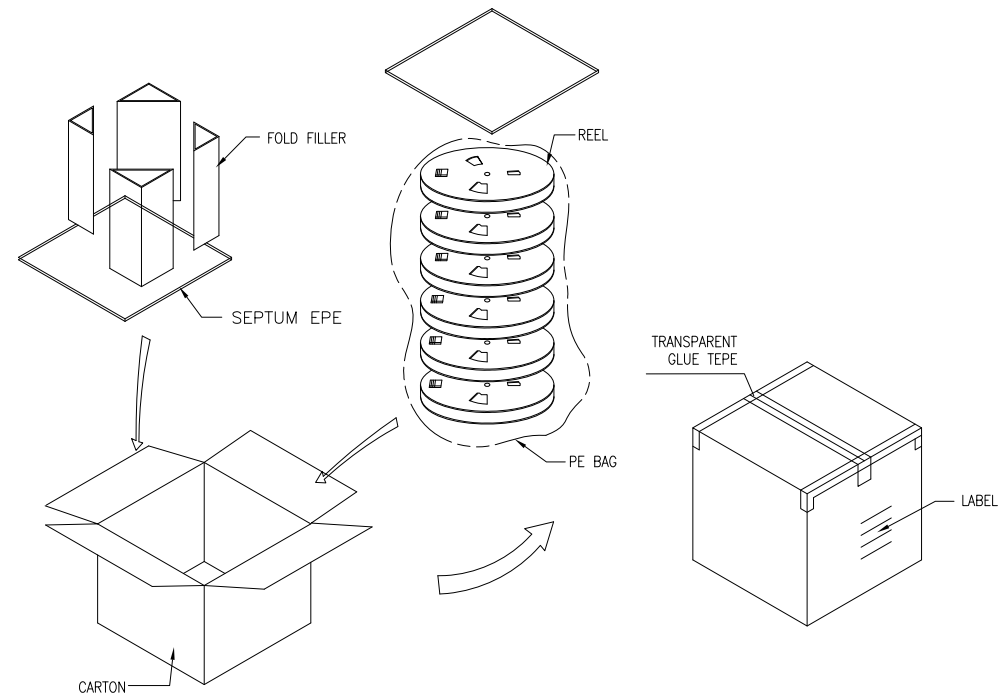
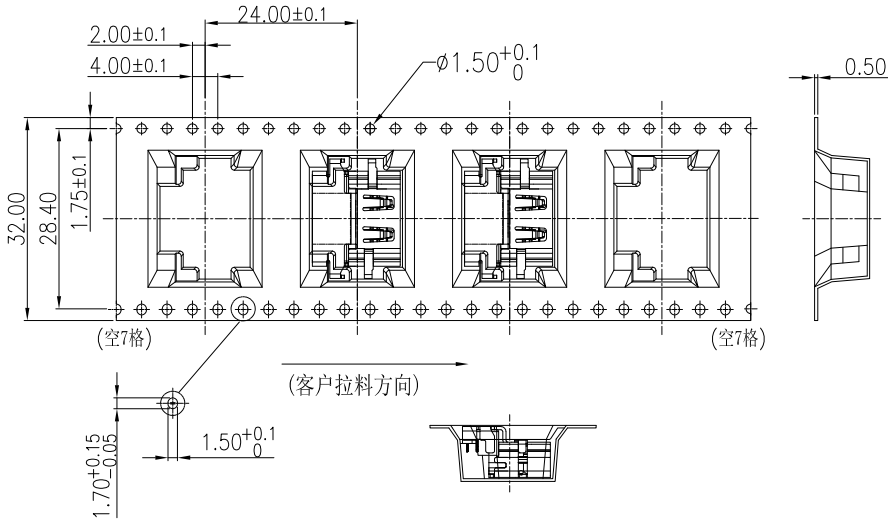
PRODUCT SPECIFICATION: DOC.No: SP-AXXXX-001	SCALE 1 : 1	DESIGN UNITS mm
TEST REPRPT DOC.No: TR-AXXXX-001	DRAWN Allen	DATE 2022/04/20
GENERAL TOLERANCES (UNLESS SPECIFIED)	CHECKED	DATE
X.XXX ± 0.15	APPROVED	DATE
X.XX ± 0.25		
X.X ± 0.30		
ANGULAR ± 3°		
THIRD ANGLE PROJECTION	DWG NO. SA0920-001	

FULLINHOPE Technology, LTD.

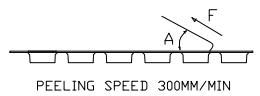
△02
 HDMI2.1 A TYPE RECEPTACLE
 REVERSE SINK CH = -2.58

PART NO. TABLE A	DWG REV. 02	SHEET NO. 1 OF 1
---------------------	----------------	---------------------

REVISION HISTORY			
REV	DESCRIPTION	Drawing	DATE
01	PROPOSAL	Allen	2022/04/22



1. COVER TAPE PEELING FORCE:



A	15°~ 0°
F	0.1N~1.3N

2. PART DIMENSIONS MEET EIA-481-D REQUIREMENT

TABLE

PRODUCT P/N	PARTS PER SHIPPING CARTON	PARTS PER REEL	LOADED REEL PER SHIPPING CARTON
A0920-0003	4000	400	10
A0920-0001			

PRODUCT SPECIFICATION: DOC.No: SP-Axxxx-001	SCALE 1 : 1	DESIGN UNITS mm	FULLINHOPE Technology, LTD.	
TEST REPORT DOC.No: TR-Axxxx-001	DRAWN Allen	DATE 2022/04/22	TITLE HDMI2.1 A TYPE RECEPTACLE REVERSE SINK CH = -2.58	
GENERAL TOLERANCES (UNLESS SPECIFIED)	CHECKED	DATE		
X.XXX ± 0.20	APPROVED	DATE		
X.XX ± 0.20				
XX ± 0.25				
ANGULAR ± 3°	DWG NO. PA0920-001	PART NO. SEE TABLE	DWG REV. 01	SHEET NO. 1 OF 1
THIRD ANGLE PROJECTION				