

REVISION HISTORY

REV	DESCRIPTION	Drawing	DATE
12	增加環保標註	Allen	2024/07/10

NOTES:

- MATERIAL:
 - HOUSING: PA9T UL94V-0; COLOR: BLACK
 - TERMINAL: C18140
 - OUT SHELL/INT SHELL: SUS304
 - MID PLATE: SUS301
- FINISH:
 - TERMINAL: GOLD (SEE TABLE) PLATED ON CONTACT AREA; G/F PLATED ON SOLDER AREA; Ni 30u" MIN. UNDERPLATED OVERALL.
 - OUT SHELL/INT SHELL: Ni 30u" MIN. PLATED OVERALL
 - MID PLATE: Ni 30u" MIN. PLATED OVERALL △
- ELECTRICAL SPECIFICATION:
 - RATED CURRENT: VBUS AND GND PIN 5.0A; Other pin 0.25A
 - CONTACT RESISTANCE: 40mΩ MAX(INITIAL). 50mΩ MAX (AFTER).
 - INSULATION RESISTANCE: 100MΩ MIN.
 - DIELECTRIC WITHSTANDING VOLTAGE: 100V AC R.M.S.
- MACHINERY SPECIFICATION:
 - MATING FORCE: 5N~20N. UNMATING FORCE: 8N~20N. (AFTER TEST:6N~20N).
 - DURABILITY: 10000 CYCLES MIN.
- ENVIRONMENTAL SPECIFICATION:
 - OPERATING CONDITION: TEMPERATURE -40°C~+85°C; HUMIDITY 80% R.H MAX
 - SALT SPRAY: 24H
 - SOLDER ABILITY: 245±5°C, 5±0.5s
 - IR REFLOW: THE PEAK TEMPERATURE ON THE BOARD SHALL BE MAINTAINED FOR 10 SECONDS AT 260°C.
 - MEET TYPE C Gen3.

USB TYPE-C PIN ASSIGNMENTS:

PIN	SIGNAL NAME	PIN	SIGNAL NAME
A12	GND	B1	GND
A11	SSRXp2	B2	SSTXp2
A10	SSRXn2	B3	SSTXn2
A9	VBUS	B4	VBUS
A8	SBU1	B5	CC2
A7	Dn1	B6	Dp2
A6	Dp1	B7	Dn2
A5	CC1	B8	SBU2
A4	VBUS	B9	VBUS
A3	SSTXn1	B10	SSRXn1
A2	SSTXp1	B11	SSRXp1
A1	GND	B12	GND

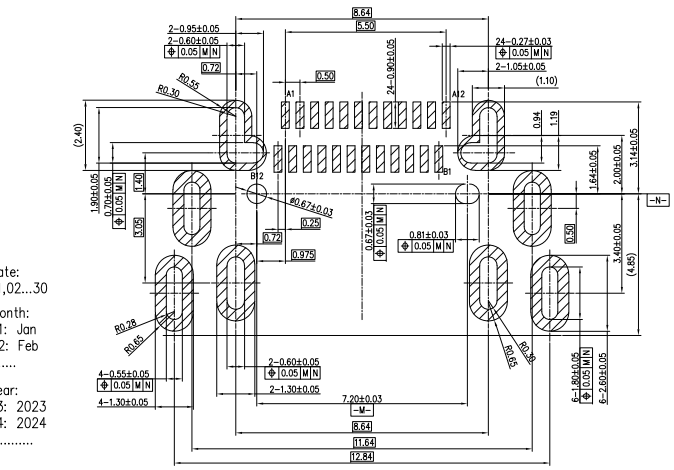
FULLINHOPE Technology, LTD.

USB TYPE C 24PIN RECEPTACLE
CH = 1.58 SMT+DIP

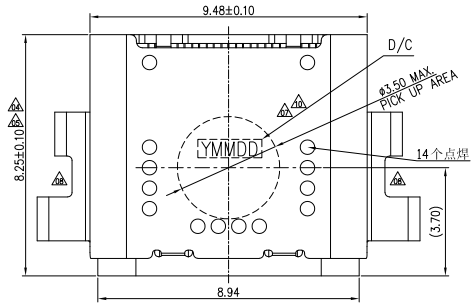
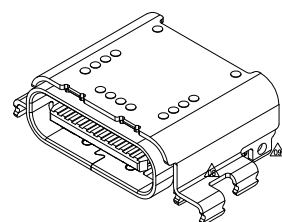
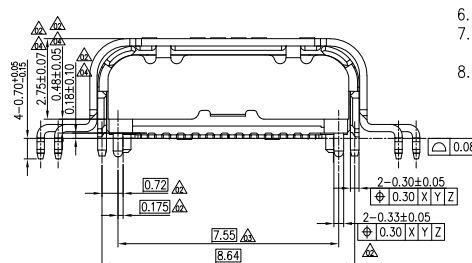
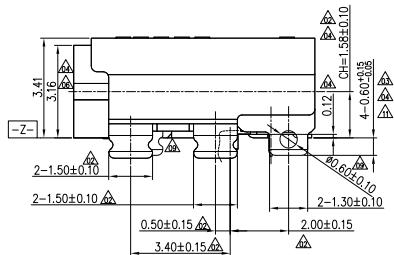
PRODUCT SPECIFICATION: DOC.No: SP-Axxxx-001	SCALE 1 : 1	DESIGN UNITS mm	TITLE
TEST REPORT DOC.No: TR-Axxxx-001	DRAWN Allen	DATE 2024/04/15	
GENERAL TOLERANCES (UNLESS SPECIFIED)	CHECKED	DATE	
X.XXX ± 0.10	APPROVED	DATE	
X.XX ± 0.20			
X.X ± 0.30			
ANGULAR ± 2°	DWG NO. SA1019-001	PART NO. TABLE A	DWG REV. 12
THIRD ANGLE PROJECTION		SHEET NO. 1 OF 1	

TABLE

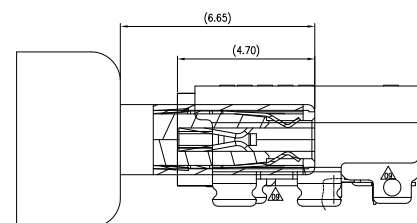
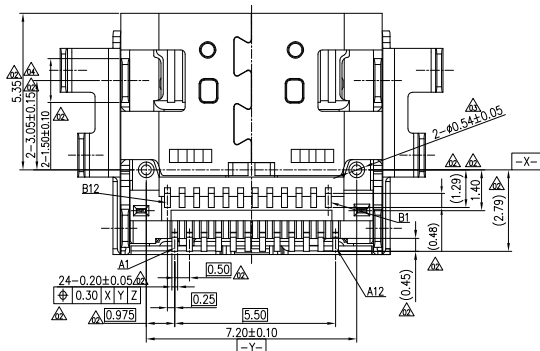
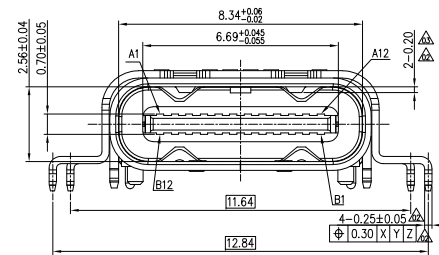
FIH P/N	TABLE A GOLD PLATING THICKNESS
A1019-0003	Au30u
A1019-0001	G/F



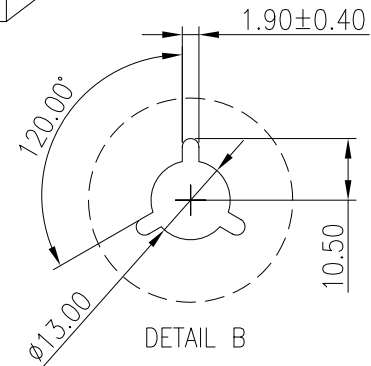
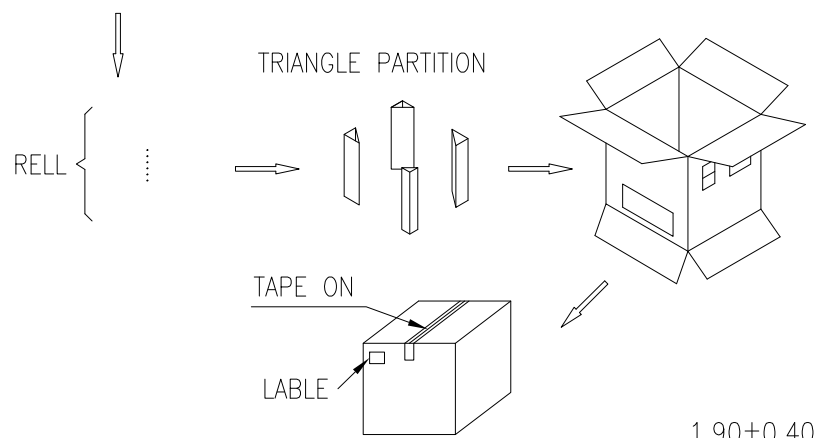
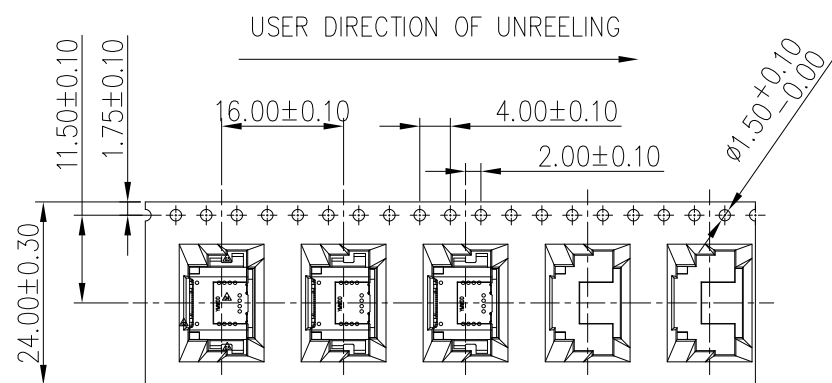
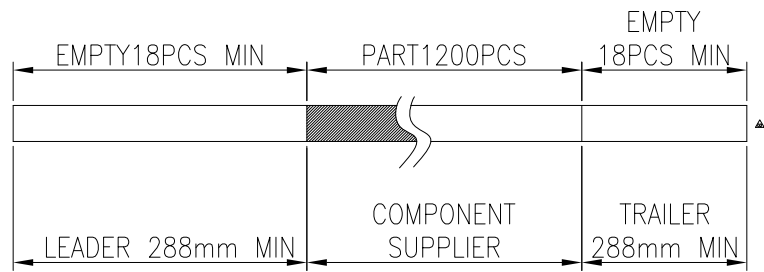
RECOMMENDED PCB LAYOUT(TOP VIEW)
(TOLERANCE=±0.05mm THICKNESS=0.8mm)



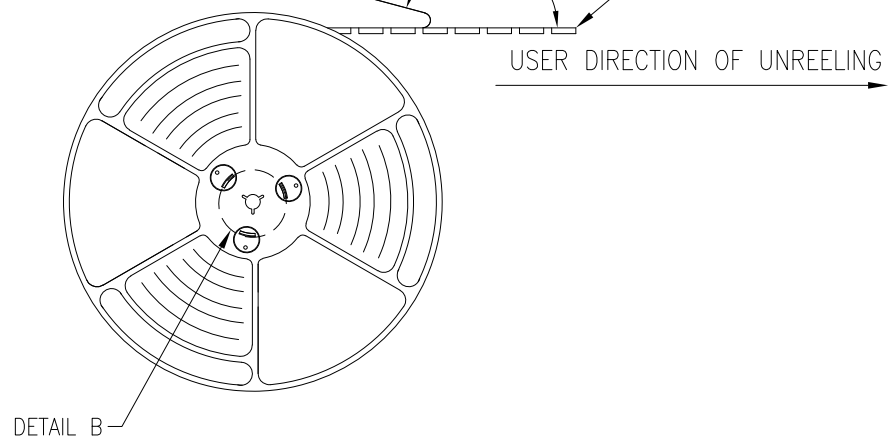
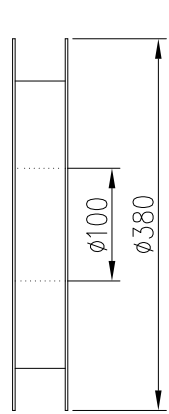
YYMMDD
Date: 01,02...30
Month: 01: Jan
02: Feb
.....
Year: 23: 2023
24: 2024
.....



REVISION HISTORY			
REV	DESCRIPTION	Drawing	DATE
04	修改D/C位置	Allen	2024/07/05



COVER TAPE PEELING ANGLE: 165°~180°
PEELING FORCE: 20~130g
CARRIER TAPE



TABLE

PRODUCT P/N	PARTS PER SHIPPING CARTON	PARTS PER REEL	LOADED REEL PER SHIPPING CARTON				
A1019-0003	12000 (PSC)	1200	10				
A1019-0001							
PRODUCT SPECIFICATION: DOC.No: SP-AXXXX-001 TEST REPORT DOC.No: TR-AXXXX-001		SCALE 1 : 1	DESIGN UNITS mm	FULLINHOPE Technology, LTD. TITLE USB TYPE C 24PIN RECEPTACLE CH = 1.58 SMT+DIP			
GENERAL TOLERANCES (UNLESS SPECIFIED)		DRAWN Allen	DATE 2024/04/15				
X.XXX	± 0.20	CHECKED	DATE				
X.XX	± 0.20	APPROVED	DATE				
X.X	± 0.25						
ANGULAR ± 3°		THIRD ANGLE PROJECTION		DWG NO. PA1019-001	PART NO. SEE TABLE	DWG REV. 04	SHEET NO. 1 OF 1