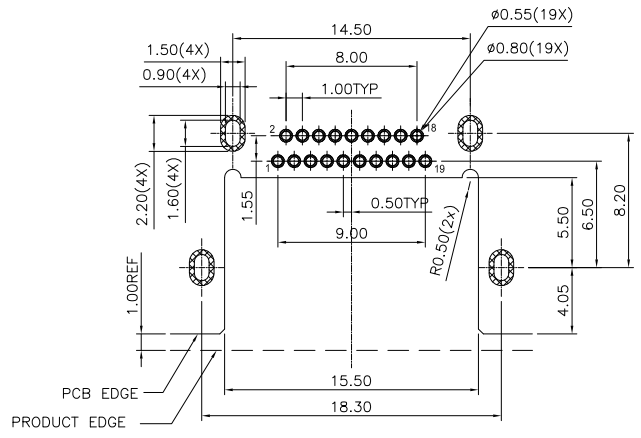
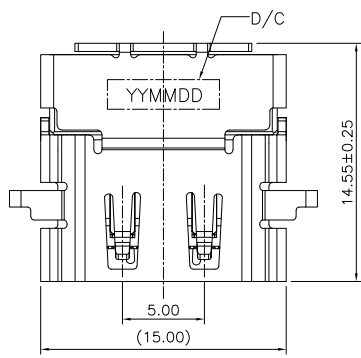
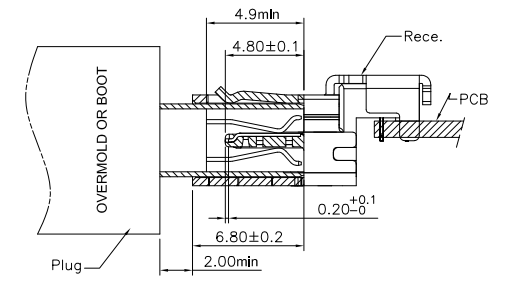
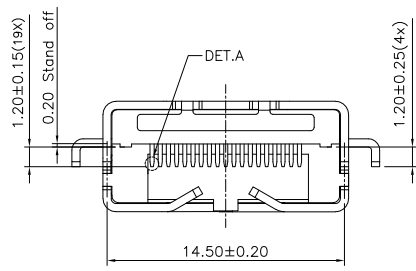
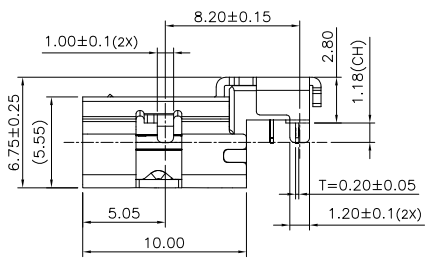
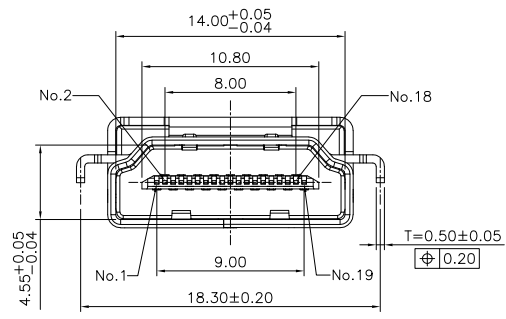


REVISION HISTORY			
REV	DESCRIPTION	Drawing	DATE
01	PROPOSAL	Allen	2020/07/22

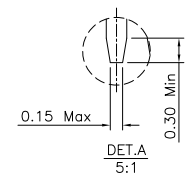
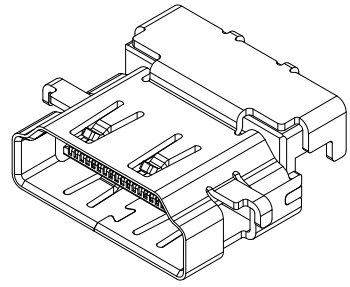
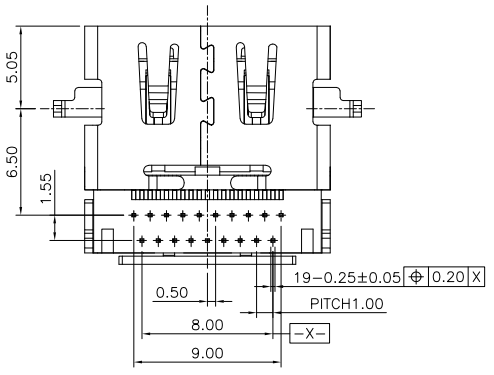
NOTE:  
 1. MATERIAL:  
 1.1 HOUSING: PA9T, HIGH TEMPERATURE THERMOPLASTIC, UL94V-0, COLOR:BLACK.  
 1.2 CONTACT: COPPER ALLOY.  
 1.3 SHELL: METAL.  
 2. FINISH:  
 2.1 TERMINAL: 50u" MIN. NICKEL PLATED OVERALL  
 2.2 CONTACT: SELECTIVE GOLD PLATED, SRR TABLE A.  
 2.3 TAIL: 100u" MIN MATT-TIN PLATED.  
 2.4 SHELL: 50u" MIN. NICKEL PLATED OVERALL.



RECOMMENDED P.C.B LAYOUT (COMPONENT SIDE)  
 THICKNESS=1.00±0.05 (TOP VIEW)



Mated Condition



TABLE

FIH P/N	TABLE A GOLD PLATING THICKNESS
A0827-0003	Au30u
A0827-0001	G/F

PRODUCT SPECIFICATION: DOC.No: SP-AXXXX-001	SCALE 1 : 1	DESIGN UNITS mm
TEST REPORT DOC.No: TR-AXXXX-001	DRAWN Allen	DATE 2020/07/22
GENERAL TOLERANCES (UNLESS SPECIFIED)	CHECKED	DATE
X.XXX ± 0.10	APPROVED	DATE
X.XX ± 0.25	DWG NO. SA0827-001	
X.X ± 0.38		
ANGULAR ± 3°		
THIRD ANGLE PROJECTION		

FULLINHOPE Technology, LTD.		
TITLE HDMI A TYPE FEMALE REVERSE, SINKING,C/H=-1.18mm		
PART NO. TABLE A	DWG REV. 01	SHEET NO. 1 OF 1