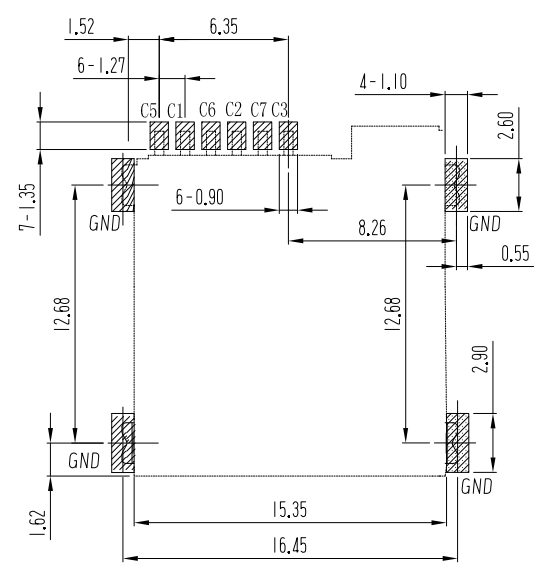
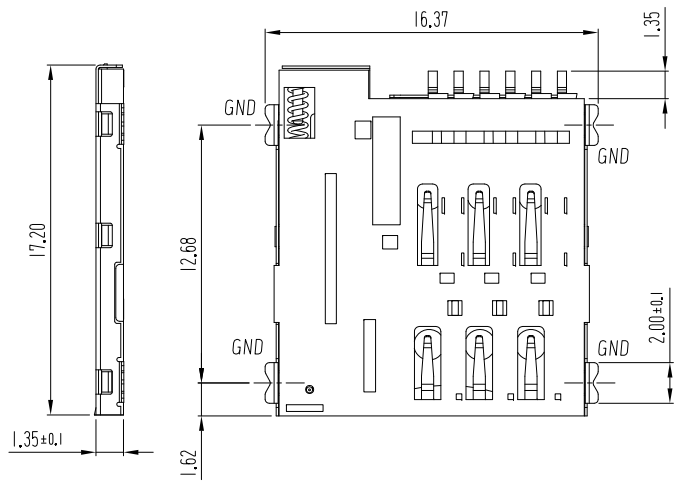
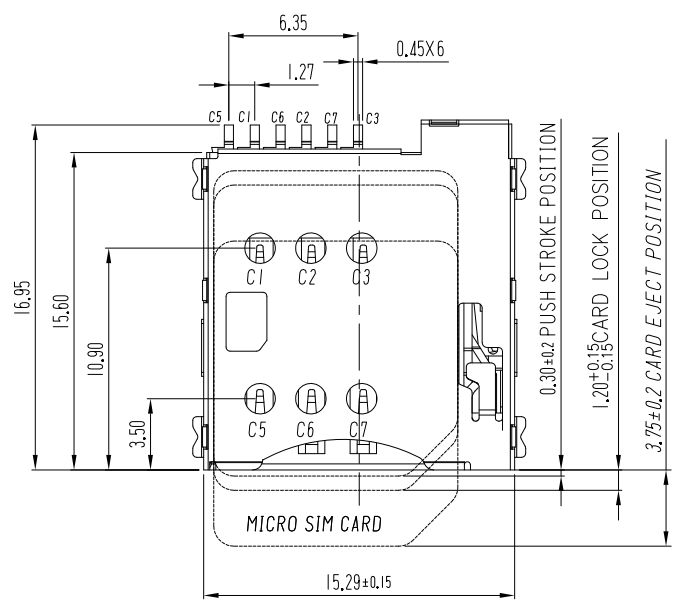
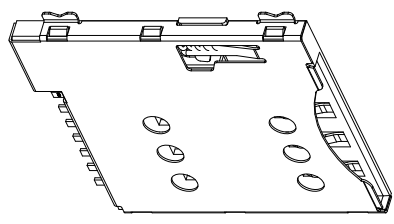
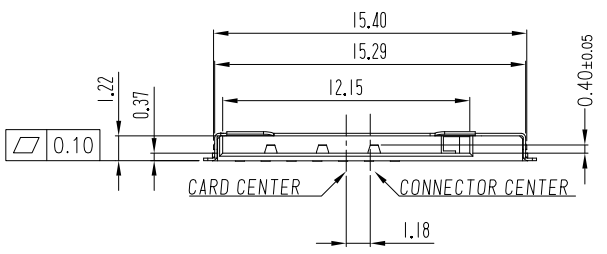


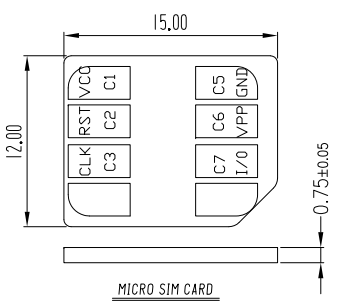
REVISION HISTORY			
REV	DESCRIPTION	Drawing	DATE
01	PROPOSAL	Linda	2019/03/25



PCB 焊盘区  
 下沉避位区  
**RECOMMENDED PCB LAYOUT**  
 GENERAL TOLERANCE ±0.05



- NOTE:
- MATERIAL:
    - INSULATOR: LCP,UL94V-0, COLOR: BLACK
    - CONTACT: C5191
    - SHELL & FORK LOCK : SUS304
  - FINISH:
    - TERMINAL: 50u" MIN. NICKEL PLATED OVERALL
    - CONTACT: SELECTIVE GOLD PLATED, SEE TABLE A
    - TAIL: 100u" MIN MATT-TIN PLATED
    - FORK LOCK : 50u" MIN. NICKEL PLATED OVERALL
  - PRODUCT SPECIFICATION REFER TO SP-A0699-01
  - PACKAGE DRAWING REFER TO PA0699-01
  - PRODUCT MUST CONFORM TO RoHS AND HALOGEN FREE REQUIREMENT



SIM pin assignment		TABLE A	
PIN #	Name	FIH P/N	GOLD PLATING THICKNESS
C1	VCC 供电电压	A0699-0003	AU30U
C2	RST 重置	A0699-0001	G/F
C3	CLK 时钟		
C5	GND 接地		
C6	VPP 程序电压		
C7	I/O 输入输出		

PRODUCT SPECIFICATION: DOC.No: SP-A0699-001	SCALE 1 : 1	DESIGN UNITS mm	FULLINHOPE Technology, LTD.		
TEST REPORT DOC.No: TR-A0699-001	DRAWN Linda	DATE 2019/03/25	TITLE MICRO-SIM ,PUSH/PUSH 1.35H - 6 PIN		
GENERAL TOLERANCES (UNLESS SPECIFIED)	CHECKED	DATE			
X.XXX ± 0.20	APPROVED	DATE			
X.XX ± 0.20					
X.X ± 0.25					
ANGULAR ± 3°	DWG NO. SA0699-001	PART NO. A0699-0001	DWG REV. 01	SHEET NO. 1 OF 1	
THIRD ANGLE PROJECTION					