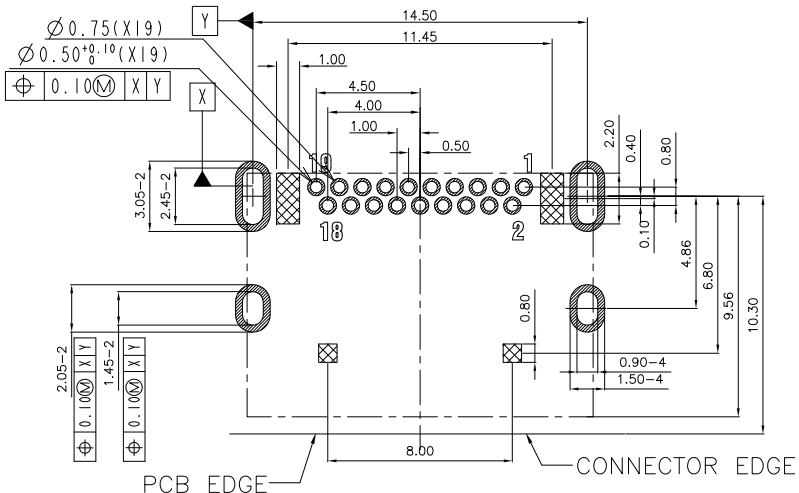
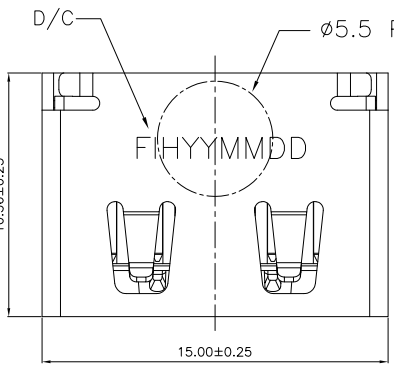
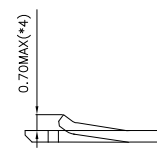
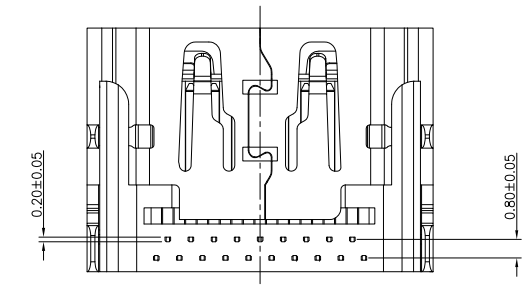
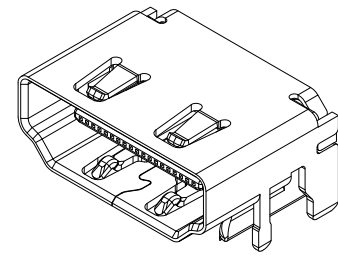
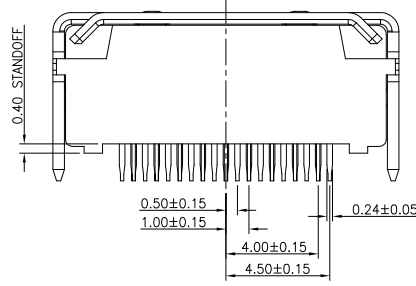
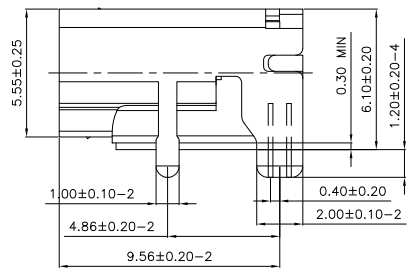
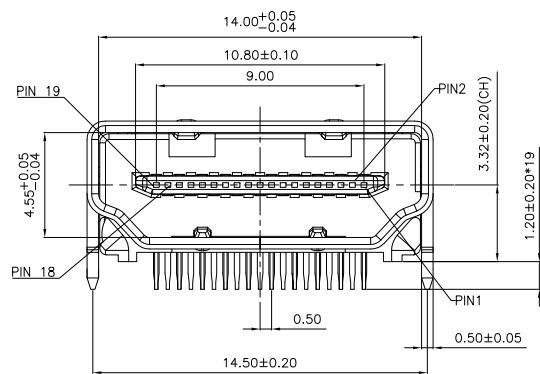


REVISION HISTORY			
REV	DESCRIPTION	Drawing	DATE
01	PROPOSAL	Mei Chen	2018/05/31
02	PROPOSAL	Mei Chen	2018/07/05
03	PROPOSAL	Mei Chen	2018/11/12
04	PROPOSAL	Mei Chen	2018/11/15
05	PROPOSAL	Mei Chen	2019/05/30
06	鐵殼更改材質	Mei Chen	2019/06/20



- NOTES:
- MATERIAL:
 - 1.1 PLASTIC: LCP , UL 94V-0, COLOR: BLACK
 - 1.2 CONTACT: C2680
 - 1.3 SHELL: SUS301
 - FINISH:
 - 2.1 TERMINAL: 50u" MIN. NICKEL PLATED OVERALL
 - 2.2 CONTACT: SELECTIVE GOLD PLATED, SEE TABLE A
 - 2.3 TAIL: 100u" MATT-TIN PLATED
 - 2.4 SHELL: 50u" MIN. NICKEL PLATED OVERALL
 - PRODUCT SPECIFICATION REFER TO SP-A0612-01
 - PACKAGE DRAWING REFER TO PA0612-01
 - PRODUCT MUST CONFORM TO RoHS AND HALOGEN FREE REQUIREMENT
 - DATE CODE: XX (YEAR), XX (MONTH) ,XX (DATE),LASER

RECOMMENDED PCB THICKNESS:1.00±0.05mm
COMPONENT SIDE(TOL:±0.05)



SPRING MOTION HIGHEST POINT

FIH P/N	TABLE A GOLD PLATING THICKNESS
A0612-0003	Au30u
A0612-0001	G/F

PRODUCT SPECIFICATION: DOC.No: SP-AXXXX-XX	SCALE 1 : 1	DESIGN UNITS mm
TEST REPRDT DOC.No: TR-AXXXX-XX	DRAWN Mei Chen	DATE 2018/05/31
GENERAL TOLERANCES (UNLESS SPECIFIED)	CHECKED	DATE
X.XXX ± 0.20		
X.XX ± 0.20		
X.X ± 0.25		
ANGULAR ± 3°	APPROVED	DATE
THIRD ANGLE PROJECTION	DWG NO. SA0612-001	

FULLINHOPE Technology, LTD.

TITLE HDMI AF R/A DIP RVS TYPE CH=3.32		
PART NO. TABLE A	DWG REV. 06	SHEET NO. 1 OF 1

10

9

8

7

6

5

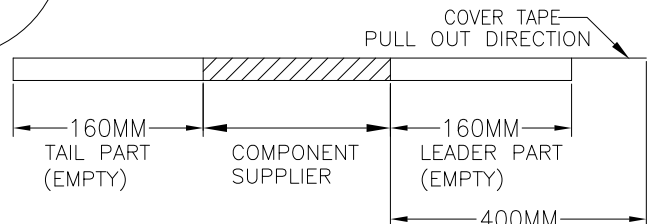
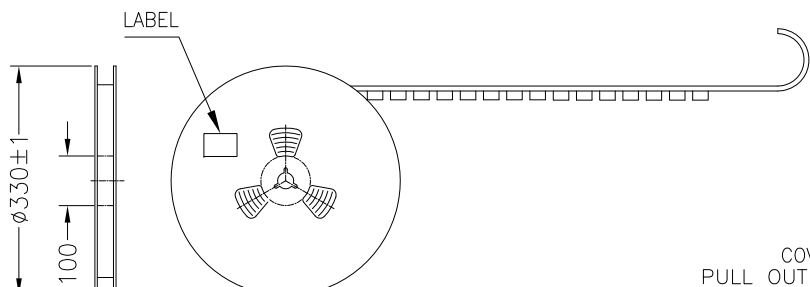
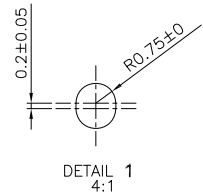
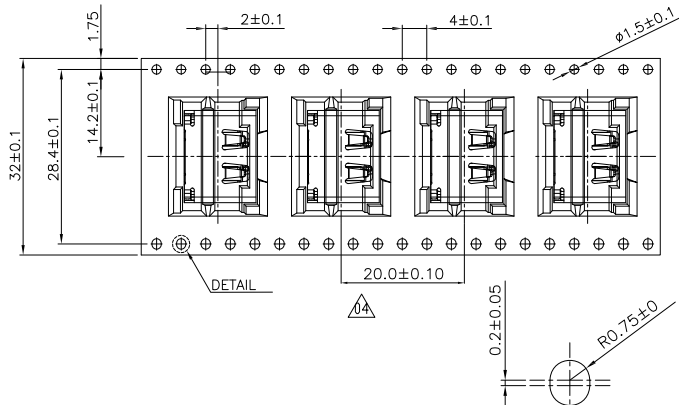
4

3

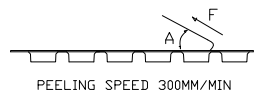
2

1

收料方向
GATHER MATERIAL DIRECTION
放料方向
INPUT MATERIAL DIRECTION



1. COVER TAPE PEELING FORCE:



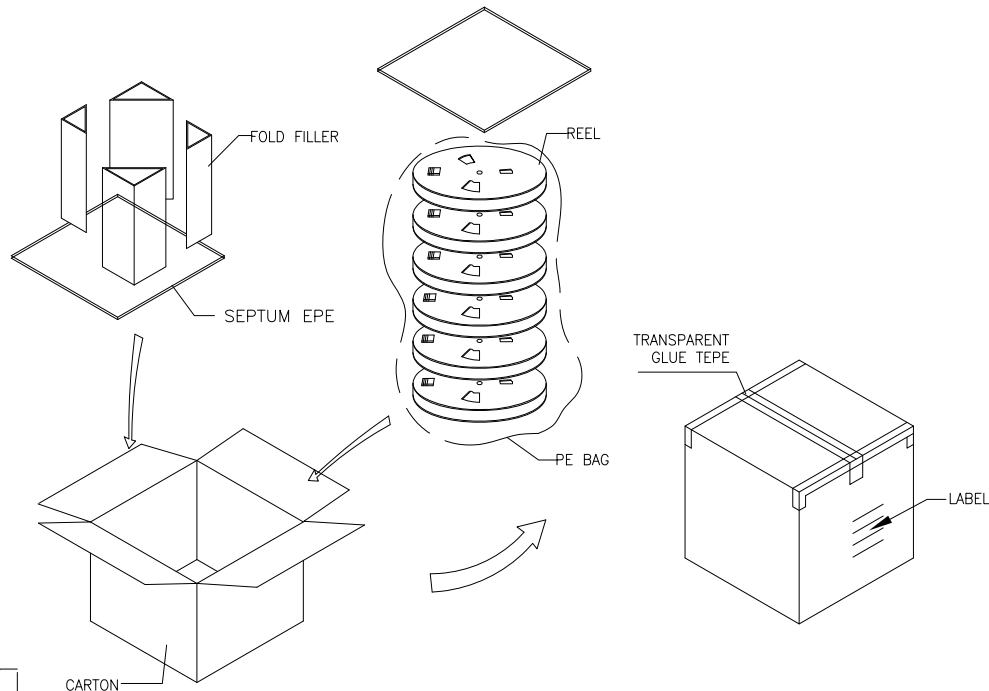
A	15°~ 0°
F	0.1N~1.3N

2. PART DIMENSIONS MEET EIA-481-2-A REQUIREMENT

PEELING SPEED 300MM/MIN

REVISION HISTORY

REV	DESCRIPTION	Drawing	DATE
01	PROPOSAL	Mei Chen	2018/07/03
02	PROPOSAL	Mei Chen	2018/11/12
03	更改包裝方向及數量	Mei Chen	2018/11/19
04	更改包裝PITCH及數量	Mei Chen	2019/02/26



TABLE

PRODUCT P/N	PARTS PER SHIPPING CARTON	PARTS PER REEL	LOADED REEL PER SHIPPING CARTON
A0612-0003	4000	400	10
A0612-0001			

PRODUCT SPECIFICATION: DOC.No: SP-AXXXX-001	SCALE 1 : 1	DESIGN UNITS mm	FULLINHOPE Technology, LTD.	
TEST REPORT DOC.No: TR-AXXXX-001	DRAWN Mei Chen	DATE 2018/07/03	TITLE HDMI AF R/A DIP RVS TYPE CH= 3.33	
GENERAL TOLERANCES (UNLESS SPECIFIED)	CHECKED	DATE		
X.XXX ± 0.20	APPROVED	DATE		
X.XX ± 0.20				
X.X ± 0.25				
ANGULAR ± 3°				
THIRD ANGLE PROJECTION	DWG NO. PA0612-001	PART NO. SEE TABLE	DWG REV. 04	SHEET NO. 1 OF 1

9

8

7

6

5

4

3

2

1