

REVISION HISTORY			
REV	DESCRIPTION	Drawing	DATE
02	膠芯後面STAND OFF變更形狀	Allen	2022/06/16

NOTE:  
 1. MATERIAL:  
 1.1 HOUSING: LCP+30% G.F  
 UL94V-0, COLOR: BLACK  
 1.2 CONTACT: C2680.  
 1.3 SHELL: SK7.  
 2. FINISH:  
 2.1 CONTACT: GOLD (SEE TABLE) PLATED ON CONTACT AREA  
 100u" MIN. MATT TIN PLATED ON SOLDER TAILS  
 50u" MIN. NICKEL UNDERPLATED OVER ALL.  
 2.2 SHELL: 50u" MIN. NICKEL UNDERPLATED OVER ALL.

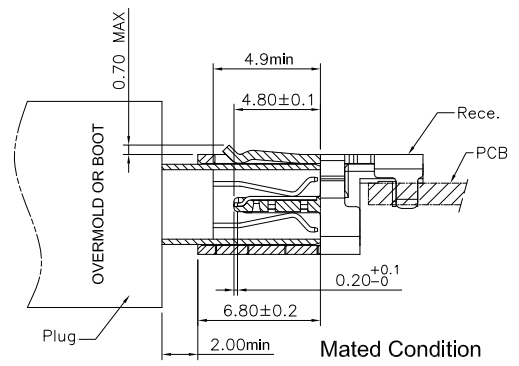
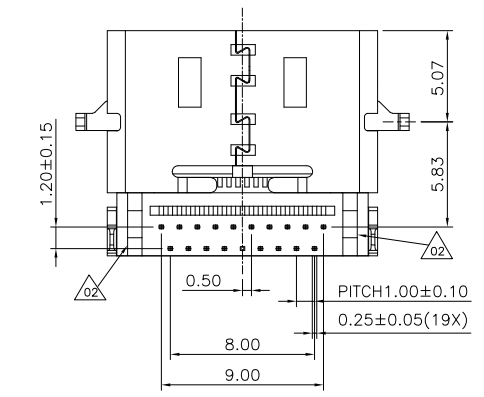
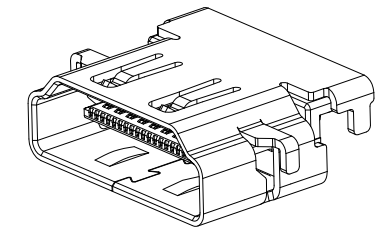
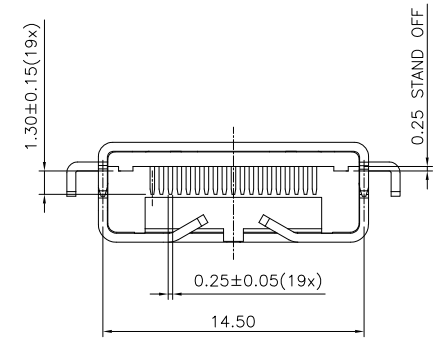
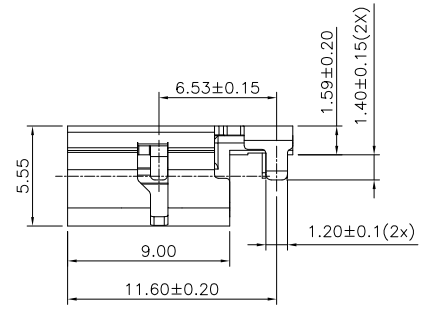
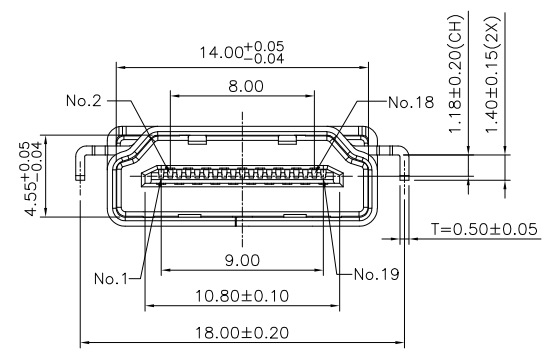
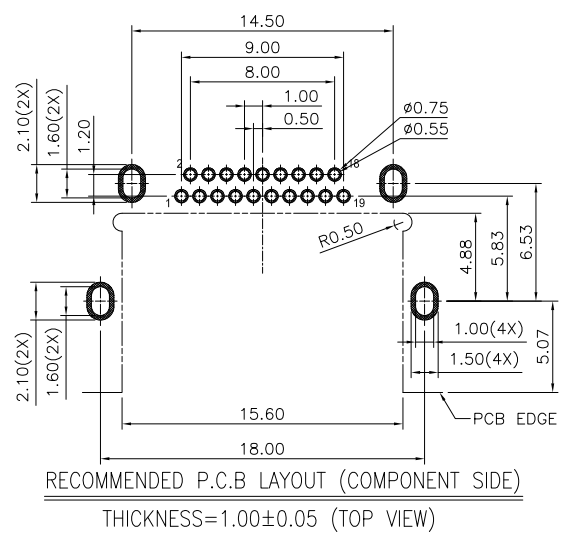
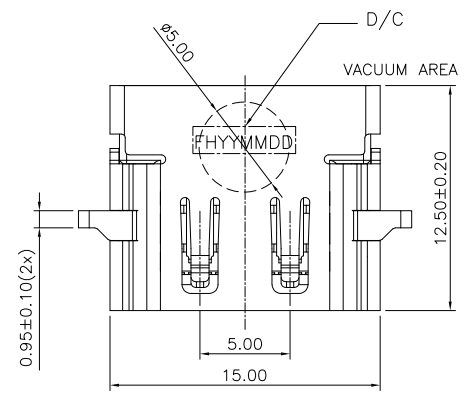


TABLE	
FIH P/N	TABLE A GOLD PLATING THICKNESS
A0922-0003	Au30u
A0922-0001	G/F

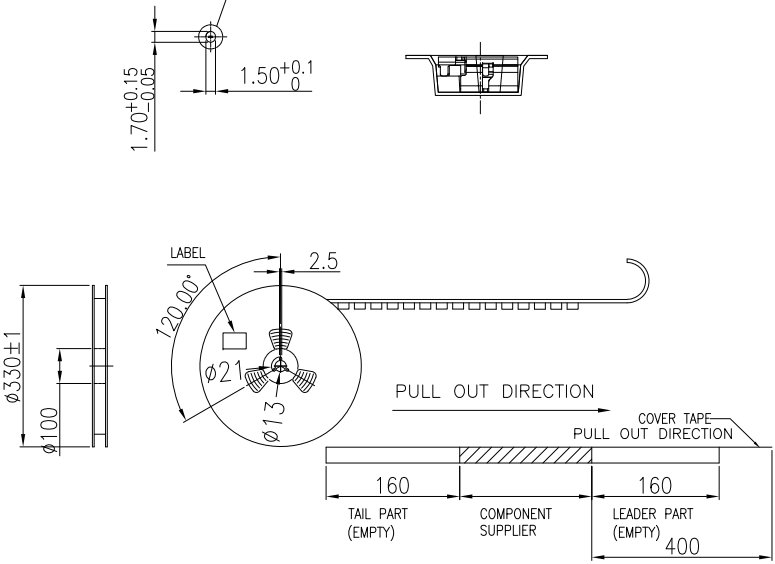
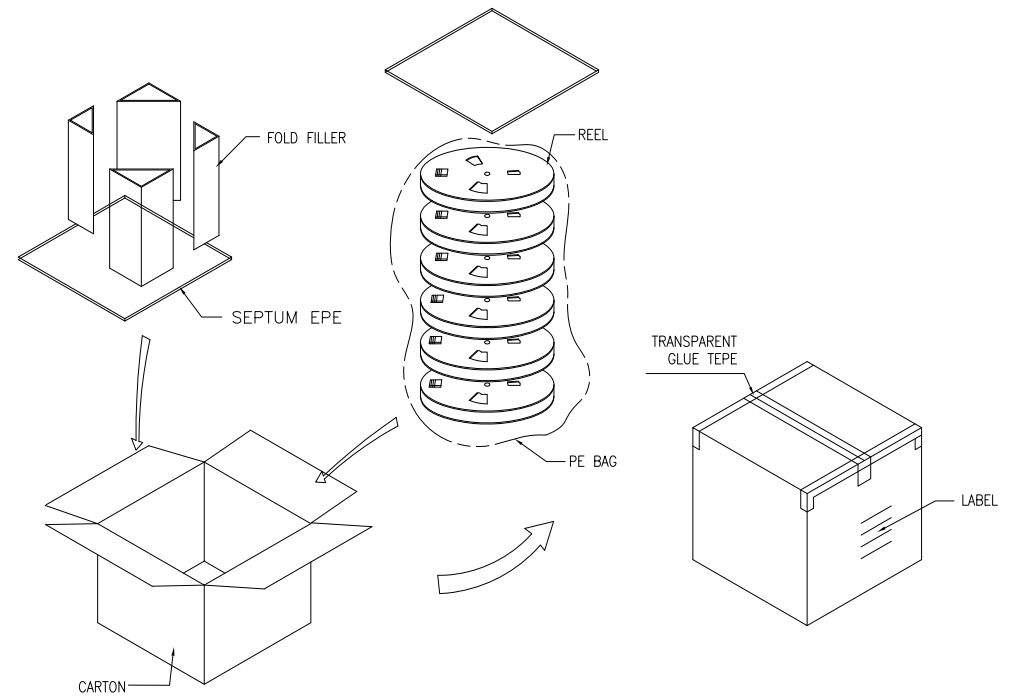
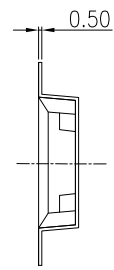
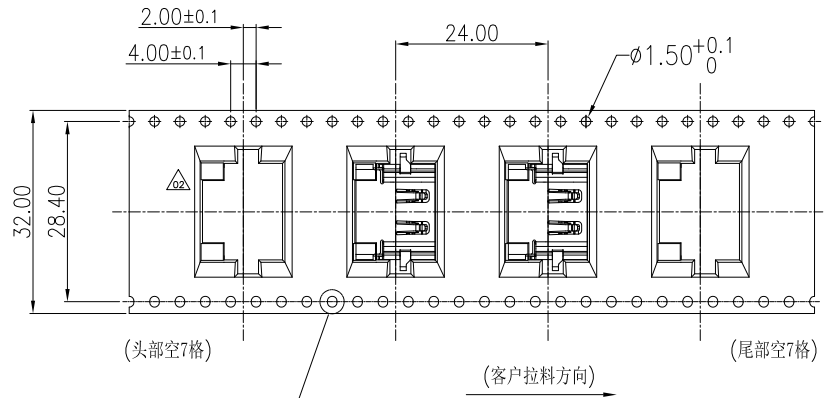
PRODUCT SPECIFICATION: DOC.No: SP-AXXXX-001	SCALE 1 : 1	DESIGN UNITS mm
TEST REPORT DOC.No: TR-AXXXX-001	DRAWN Allen	DATE 2022/04/28
GENERAL TOLERANCES (UNLESS SPECIFIED)	CHECKED	DATE
X.XXX ± 0.15	APPROVED	DATE
X.XX ± 0.25		
X.X ± 0.30		
ANGULAR ± 3°		
THIRD ANGLE PROJECTION	DWG NO. SA0922-001	

**FULLINHOPE Technology, LTD.**

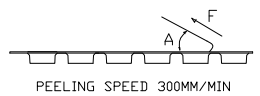
TITLE  
 HDMI A TYPE RECEPTACLE  
 REVERSE SINK CH = -1.18

PART NO. TABLE A	DWG REV. 02	SHEET NO. 1 OF 1
---------------------	----------------	---------------------

REVISION HISTORY			
REV	DESCRIPTION	Drawing	DATE
02	配合後膠芯變更載帶	Allen	2022/06/16



1.COVER TAPE PEELING FORCE:



A	15°~ 0°
F	0.1N~1.3N

PEELING SPEED 300MM/MIN

2.PART DIMENSIONS MEET EIA-481-D REQUIREMENT

TABLE

PRODUCT P/N	PARTS PER SHIPPING CARTON	PARTS PER REEL	LOADED REEL PER SHIPPING CARTON
A0922-0003	5000	500	10
A0922-0001			

PRODUCT SPECIFICATION: DOC.No: SP-Axxxx-001	SCALE 1 : 1	DESIGN UNITS mm	FULLINHOPE Technology, LTD.	
TEST REPORT DOC.No: TR-Axxxx-001	DRAWN Allen	DATE 2022/04/28	TITLE HDMI A TYPE RECEPTACLE REVERSE SINK CH = -1.18	
GENERAL TOLERANCES (UNLESS SPECIFIED)	CHECKED	DATE		
X.XXX ± 0.20	APPROVED	DATE		
X.XX ± 0.20				
XX ± 0.25				
ANGULAR ± 3°				
THIRD ANGLE PROJECTION	DWG NO. PA0922-001	PART NO. SEE TABLE	DWG REV. 02	SHEET NO. 1 OF 1