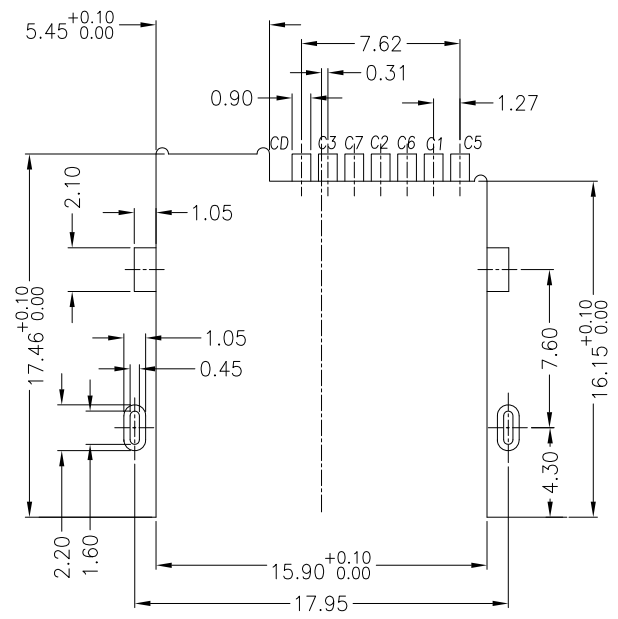
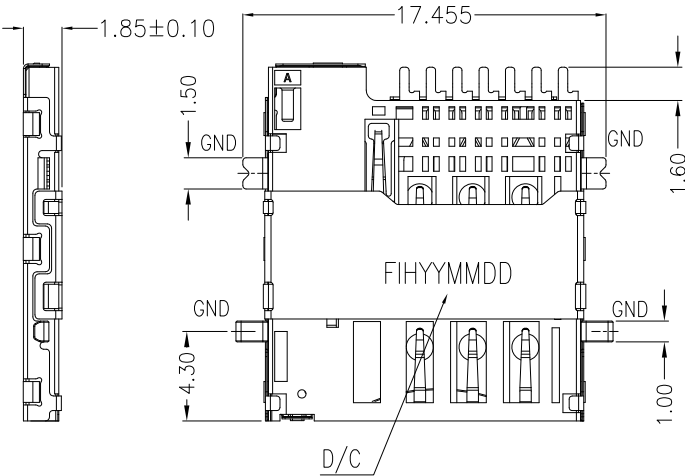
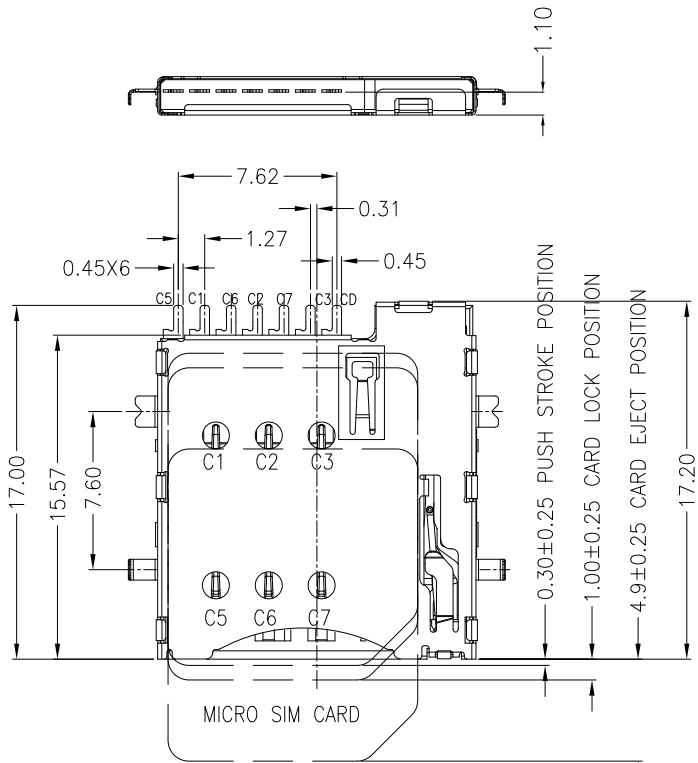
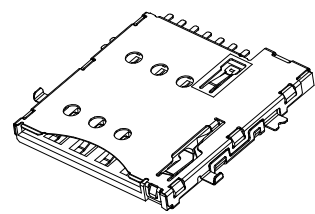
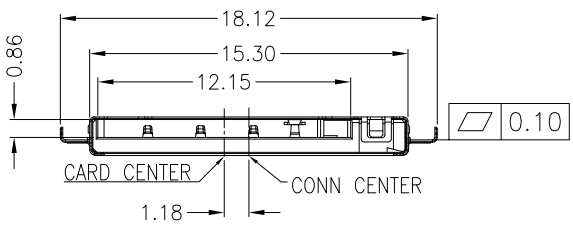


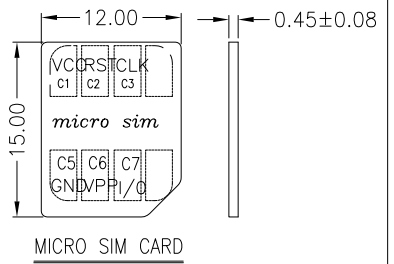
REVISION HISTORY			
REV	DESCRIPTION	Drawing	DATE
01	PROPOSAL	Mei Chen	2019/04/25



RECOMMENDED PCB LAYOUT
GENERAL TOLERANCE ±0.05



- NOTES:
- MATERIAL:
 - 1.1 PLASTIC: High Temperature Thermoplastic UL94V-0; Color Black.
 - 1.2 CONTACT: COPPER ALLOY
 - 1.3 SHELL: STAINLESS STEEL
 - 1.4 SPRING: SWP
 - FINISH:
 - 2.1 TERMINAL: 30u" MIN. NICKEL PLATED OVERALL
 - 2.2 CONTACT: SELECTIVE GOLD PLATED, SEE TABLE A
 - 2.3 TAIL: 80u" MATT-TIN PLATED
 - 2.4 SHELL: 30u" MIN. NICKEL PLATED OVERALL
 - PRODUCT SPECIFICATION REFER TO SP-A0713-01
 - PACKAGE DRAWING REFER TO PA0713-01
 - PRODUCT MUST CONFORM TO RoHS AND HALOGEN FREE REQUIREMENT



TABLE

FIH P/N	TABLE A GOLD PLATING THICKNESS
A0713-0003	Au30u
A0713-0001	G/F

SIM pin Assignment		GENERAL TOLERANCES (UNLESS SPECIFIED)	
PIN#	Name		
C1	VCC	X.XXX	± 0.10
C2	RST	X.XX	± 0.15
C3	CLK	X.X	± 0.25
C5	GND	ANGULAR ± 3°	
C6	VPP	THIRD ANGLE PROJECTION	
C7	I/O		

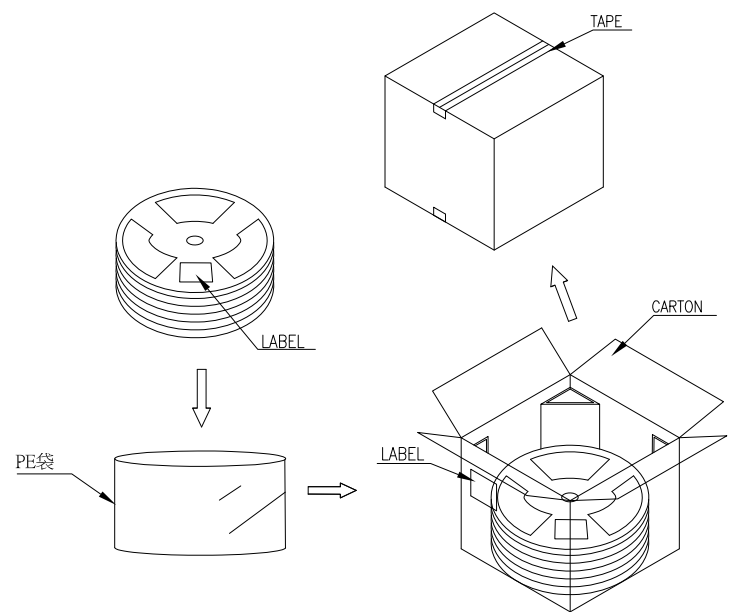
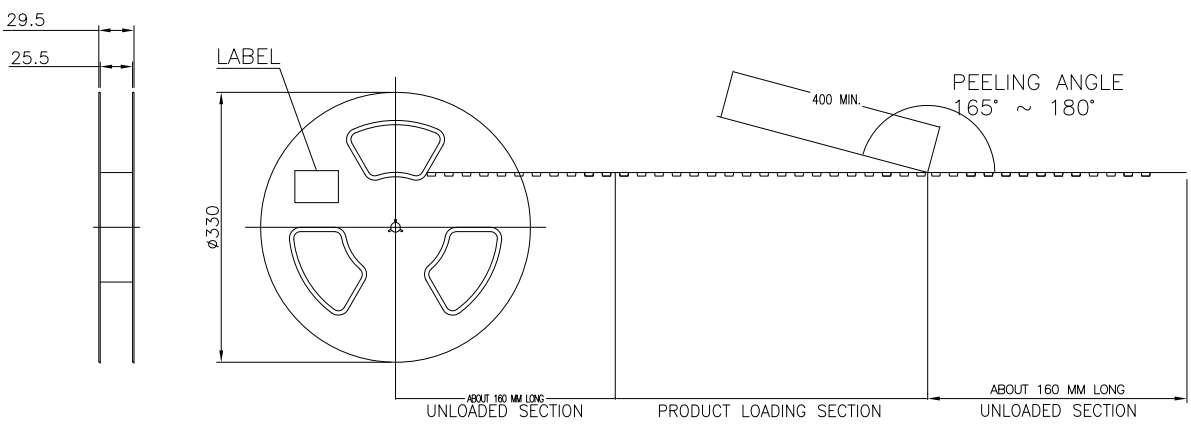
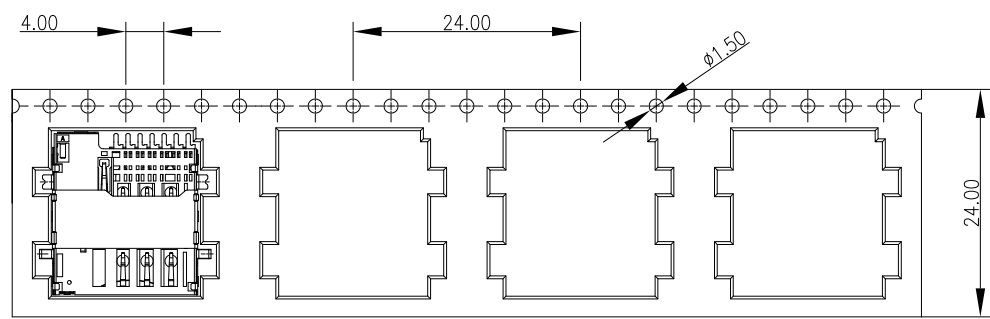
PRODUCT SPECIFICATION: DOC.No: SP-AXXX-XX	SCALE 1 : 1	DESIGN UNITS mm
TEST REPORT DOC.No: TR-AXXX-XX	DRAWN Mei Chen	DATE 2019/02/20
	CHECKED	DATE
	APPROVED	DATE
	DWG NO. SA0713-001	PART NO. A0713-0001

FULLINHOPE Technology, LTD.		
TITLE Micro SIM SINK Push Conn. H=1.10mm		
DWG REV. 01	SHEET NO. 1 OF 1	

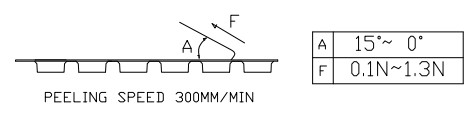
REVISION HISTORY			
REV	DESCRIPTION	Drawing	DATE
01	PROPOSAL	Mei Chen	2019/04/25

收料方向
GATHER MATERIAL DIRECTION

客户放料方向
INPUT MATERIAL DIRECTION



1. COVER TAPE PEELING FORCE:



2. PART DIMENSIONS MEET EIA-481-2-A REQUIREMENT

TABLE

PRODUCT P/N	PARTS PER SHIPPING CARTON	PARTS PER REEL	LOADED REEL PER SHIPPING CARTON
A0713-0003	10000	1000	10
A0713-0001			

PRODUCT SPECIFICATION: DOC.No: SP-AXXXX-001	SCALE 1 : 1	DESIGN UNITS mm	TITLE FULLINHOPE Technology, LTD.	
TEST REPORT DOC.No: TR-AXXXX-001	DRAWN Mei Chen	DATE 2019/04/25		
GENERAL TOLERANCES (UNLESS SPECIFIED)	CHECKED	DATE	Micro SIM SINK Push Conn. H=1.10mm	
X.XXX ± 0.20	APPROVED	DATE		
X.XX ± 0.20 X.X ± 0.25				
ANGULAR ± 3°	DWG NO. PA0713-001	PART NO. A0713-0001	DWG REV. 01	SHEET NO. 1 OF 1